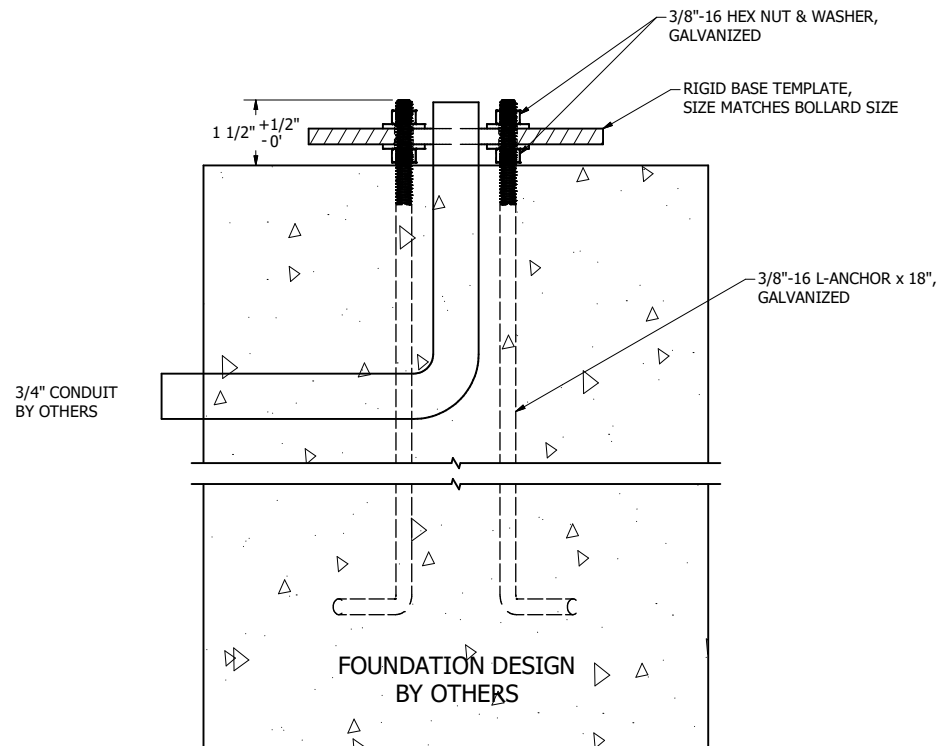


Use baseplate template to install anchor bolts as shown. Use supplied leveling nuts to ensure that the template is level in both directions. Slope concrete away from baseplate. After concrete has set, remove template from anchor installation and set bollard on top of anchor bolts. Carefully remove bollard accent panel to expose installation handhole. Tighten 3/8"-16 hex nuts until bollard is secure.



Typical Tandem Bollard Anchor Bolt installation				
STAMP	<div>STRUCTURA</div> <div>9635 Widmer Rd. phone 913.390.8787</div> <div>Lenexa, KS 66215 service@structura.com</div>			
	<div>PROJECT NAME</div> <div>PROJECT LOCATION</div>			
	SHEET NUMBER	1 of 1	REVISION Issue	DATE 10/28/2024