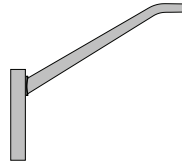
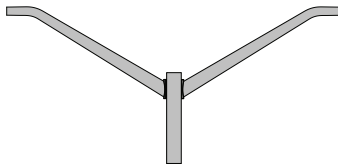


FIXTURE TYPE: _____

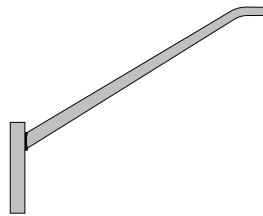
PROJECT NAME: _____



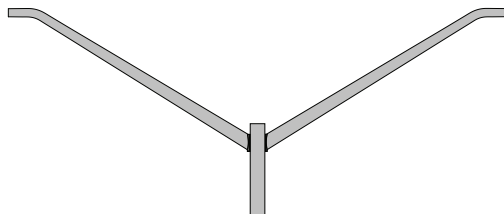
M4/1 - 4' Mast Arm



M4/2 - 4' Mast Arm



M6/1 - 6' Mast Arm



M6/2 - 6' Mast Arm

Aluminum mast and truss arms for slip fit mounting of luminaires.

FEATURES:

- Multiple arm lengths extend luminaire reach past curbs for optimum curb to curb illumination.
- Slip fitter mounting accepts the mounting of most roadway luminaires.

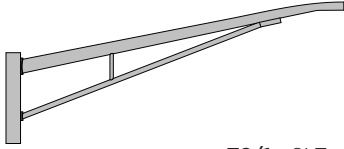
SPECIFICATIONS:

CONSTRUCTION: Tapered 6063-T6 aluminum alloy tube and arm plate.

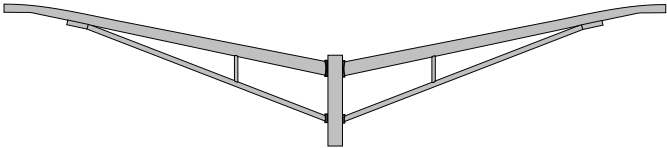
ELECTRICAL: 1" wire hole with rubber grommet.

HARDWARE: All arm fasteners are stainless steel.

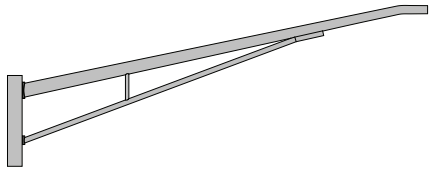
FIXTURE MOUNTING: 8" long, 2" NPS slip fitter provided for luminaire mounting.



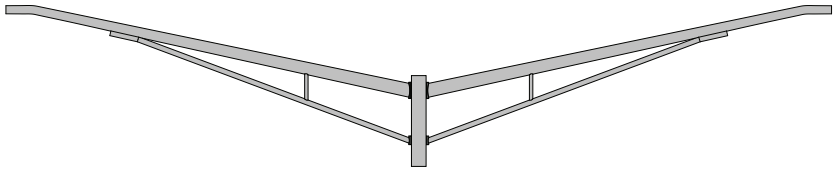
T8/1 - 8' Truss Arm



T8/2 - 8' Truss Arm



T10/1 - 10' Truss Arm



T10/2 - 10' Truss Arm

ORDERING GUIDE: EXAMPLE: M6/2



1	Type	2	Quantity
M4	4' Mast Arm	1	Single Arm
M6	6' Mast Arm	2	Double Arm
T8	8' Truss Arm		
T10	10' Truss Arm		