

FIXTURE TYPE: _____

PROJECT NAME: _____



Aluminum column with backlit acrylic panels on the front and back.

FEATURES:

- Available in heights of 24", 36", or 48"
- Option for static white or color changing LEDs
- T-slots on unlit sides for accessory mounting
- Base cover or buried base options

SPECIFICATIONS:

CONSTRUCTION: Seamless aluminum housing comprised of 6061-T6 extrusion with 6061-T6 baseplate.

ELECTRICAL: Powered by a 120-277VAC primary integral power supply. System is 0-10V or phase dimmable. Color changing option supplied with DMX compatible power supply. Constructed with a US and Canada UL listed luminaire. Minimum -4°F operating temperature.

OPTICAL SYSTEM: LED available in 2700K, 3000K, 3500K, 4000K, or RGBW color changing behind diffused Satinice acrylic panel. Calculated L70 = 54,000 hours.

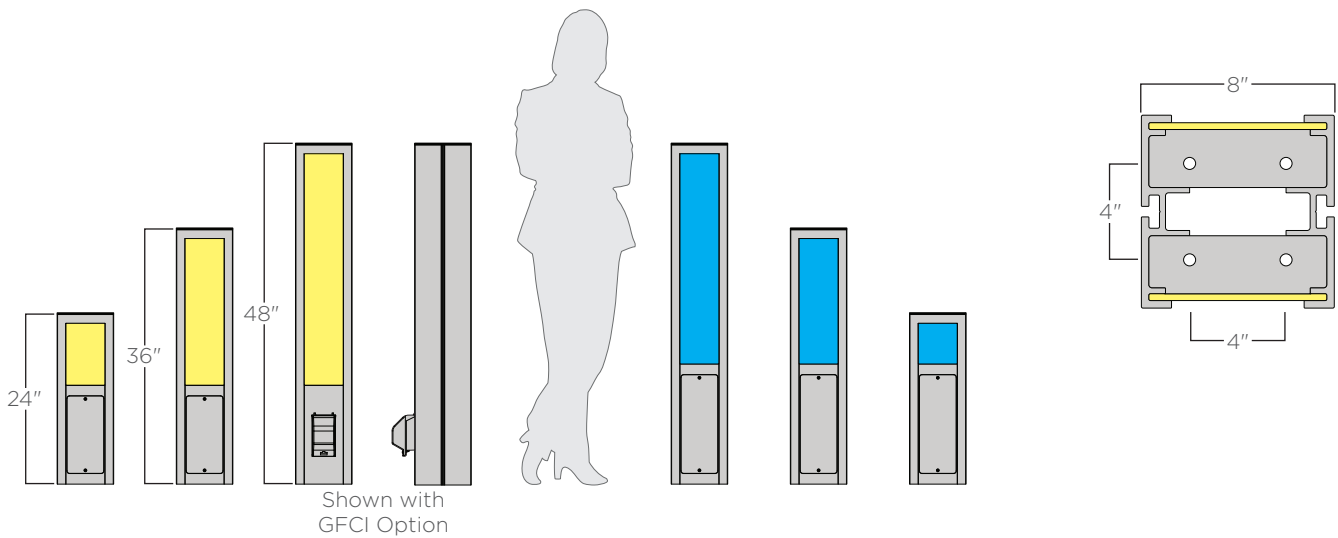
FINISHES AND MATERIALS: All exterior aluminum parts are polyester powder coat painted to AAMA-2604 standards. [Care and Maintenance](#)

HARDWARE: All hardware is stainless steel. Anchor bolt kit is hot dipped galvanized.



Shown with perforated panel option using a custom pattern.

Height	Standard Output ⁽¹⁾	
	Lumens	Watts
24"	431	17
36"	949	37
48"	1467	57



ORDERING GUIDE: EXAMPLE: ELM-14-RGBW/30-C5-UNV-BC-BNR-STD



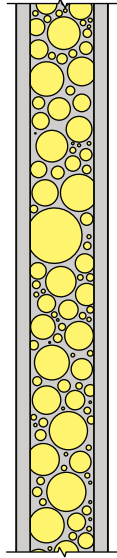
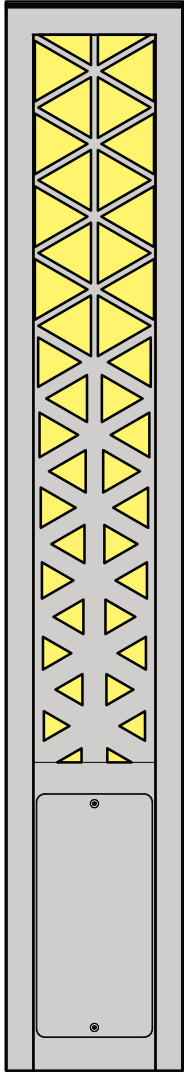
1	Series	4	Light Color	7	Voltage
ELM	Elm	L27	2700K	UNV	120-277V
2	Type	L30	3000K	8	Options
BL	Bollard	L35	3500K	GFCI	GFCI Box ⁽³⁾
3	Height	L40	4000K	PP/*	Perforated Panel ⁽⁴⁾
24	24"	RGBW/27	RGBW with 2700K	9	Special
36	36"	RGBW/30	RGBW with 3000K	STD	Standard
48	48"	RGBW/35	RGBW with 3500K		
		RGBW/40	RGBW with 4000K		
		5	Light Source⁽²⁾		
		SO	Standard Output		
		6	Metal Finish		
		C*	See color options on finishes technical sheet		
		CSM	Custom Color		

1. Output shown as combined output from front and back illumination based upon 3000K color temperature.
 2. Leave output section blank for color changing option.
 3. GFCI box comes with in-use or wet location cover. Outlet supplied by others.
 4. Perforated panel options on page 100.

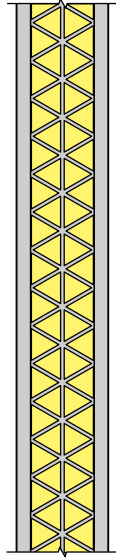
FIXTURE TYPE: _____

PROJECT NAME: _____

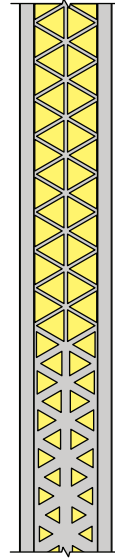
Standard Patterns



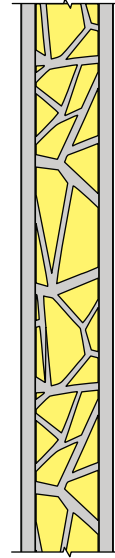
PP/1 - Circles



PP/2 - Triangles

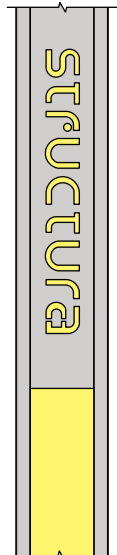


PP/3 - Faded

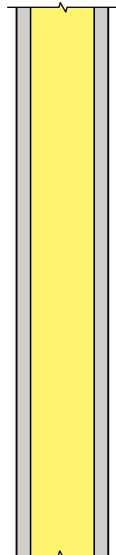


PP/4 - Stone

Custom Pattern



PP/CSM - Custom Example



5 1/2"

Height	CCT	Illuminated Area	
		Width	Height
24"	White	5 1/2"	8 1/2"
36"	White	5 1/2"	20 1/2"
48"	White	5 1/2"	32 1/2"
24"	RGBW	5 1/2"	5 1/2"
36"	RGBW	5 1/2"	17 1/2"
48"	RGBW	5 1/2"	29 1/2"

Contact Structura for custom perforated panel designs for patterns, logos, addresses, etc. A DWG file of the custom pattern is preferred.