

FIXTURE TYPE: _____

PROJECT NAME: _____



Glulam solid wood shaft and aluminum base pole available in 8' – 24' heights

FEATURES:

- Available with straight, tapered, or square to round wood shaft
- Square extruded aluminum pole base with flush handhole cover held with countersunk stainless steel fasteners
- Tenon or drill mount fixture mounting

SPECIFICATIONS:

HOUSING: Solid wood pole is assembled through glulam construction and precision machined using CNC technology. An electrical raceway is provided in the pole's center for wiring. Laminations measure no more than 2" in thickness. Adhesive complies with ASTM D-2559 glulam construction specifications for extreme exposed weather conditions, is waterproof and rated for wet or dry use exposure.

Glulam wood shaft is fastened to aluminum pole base welded to a 3/4" thick aluminum anchor bolt base. Anchor bolt kit includes (4) 3/4" hot dip galvanized anchor bolts and fasteners and ridged concrete pour template.

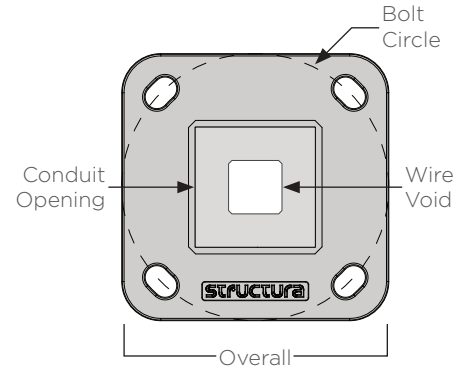
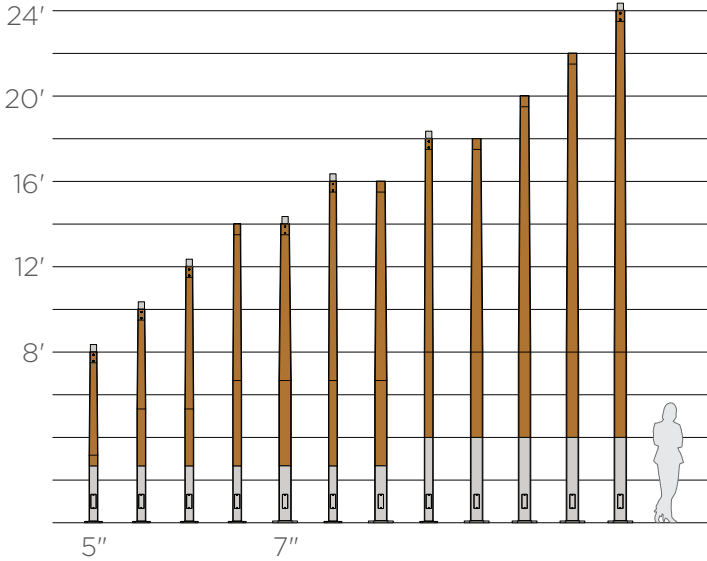
ELECTRICAL: A 5/16" – 18 grounding point is provided on the aluminum pole base. Wireway access is provided through a NEC compliant handhole with a flush, gasketed cover plate.

FINISHES AND MATERIALS: Wood pieces are finished with a low VOC waterborne matte exterior finish containing UV and mildew inhibitors. All exterior aluminum parts are polyester powder coat painted to AAMA-2604 standards. [Care and Maintenance](#)



HARDWARE: All hand hole fasteners and luminaire bracket arm hardware are stainless steel. Anchor bolt kits are ASTM F1554 grade 55 steel with galvanized steel hex nuts and washers.

FIXTURE MOUNTING: Fixtures mount either by 2 3/8", 2 7/8", 3 1/2", or 4" diameter by 4" tall tenon or drill mount for arm brackets. Bolt mounted luminaires must use stainless steel hardware.



Pole Size	Baseplate Size	Bolt Circle	Base Height ⁽¹⁾	Conduit Opening	Wire Void
5.0"	10" Sq.	10" Dia.	32"/48"	4.5" Sq.	2" Sq.
7.0"	14" Sq.	14" Dia.	32"/48"	6.5" Sq.	2" Sq.

ORDERING GUIDE: EXAMPLE: SPAR-T-22-70-50-S1-C3-T3124-BD-STD



1	Series	4	Base Dimension⁽²⁾	8	Fixture Mounting
SPAR	Spar	50 70	5.0" 7.0"	Tenon	2 3/8" x 4" Tenon 2 7/8" x 4" Tenon 3 1/2" x 4" Tenon 4" x 4" Tenon Specify other Tenon
2	Shaft Shape	5	Top Dimension	Drill	1 Drill Location 2 Drill Locations 3 Drill Locations 4 Drill Locations
S T SQRD	Square Straight Square Tapered Square to Round	40 50 70	4.0" 5.0" 7.0"	D1 D2 D3 D4	
3	Height	6	Wood Finish	9	Anchor Bolts
8 10 12 14 16 18 20 22 24	8' 10' 12' 14' 16' 18' 20' 22' 24'	S*	See color options on finishes technical sheet	BD BC	Bolt Down Anchors (recommended) Traditional Anchors with Base Cover
		7	Metal Finish	10	Special
		C*	See color options on finishes technical sheet	STD	Standard
		CSM	Custom Color		

1. Poles with a height 18' and over have a 48" tall base. Contact Structura for other base height options.
2. See wind loading tables for allowable EPA.