

FIXTURE TYPE: _____

PROJECT NAME: _____



Aluminum column with backlit acrylic panels on the front and back.

FEATURES:

- Available in heights of 8 to 20' in 2 foot increments
- Option for static white or color changing LEDs
- T-slots on unlit sides for accessory mounting
- Base cover or buried base options

SPECIFICATIONS:

CONSTRUCTION: Seamless aluminum housing comprised of 6061-T6 extrusion with 6061-T6 baseplate.

ELECTRICAL: Powered by a 120-277VAC primary integral power supply. System is 0-10V or phase dimmable. Color changing option supplied with DMX compatible power supply. Constructed with a US and Canada UL listed luminaire. Minimum -4°F operating temperature.

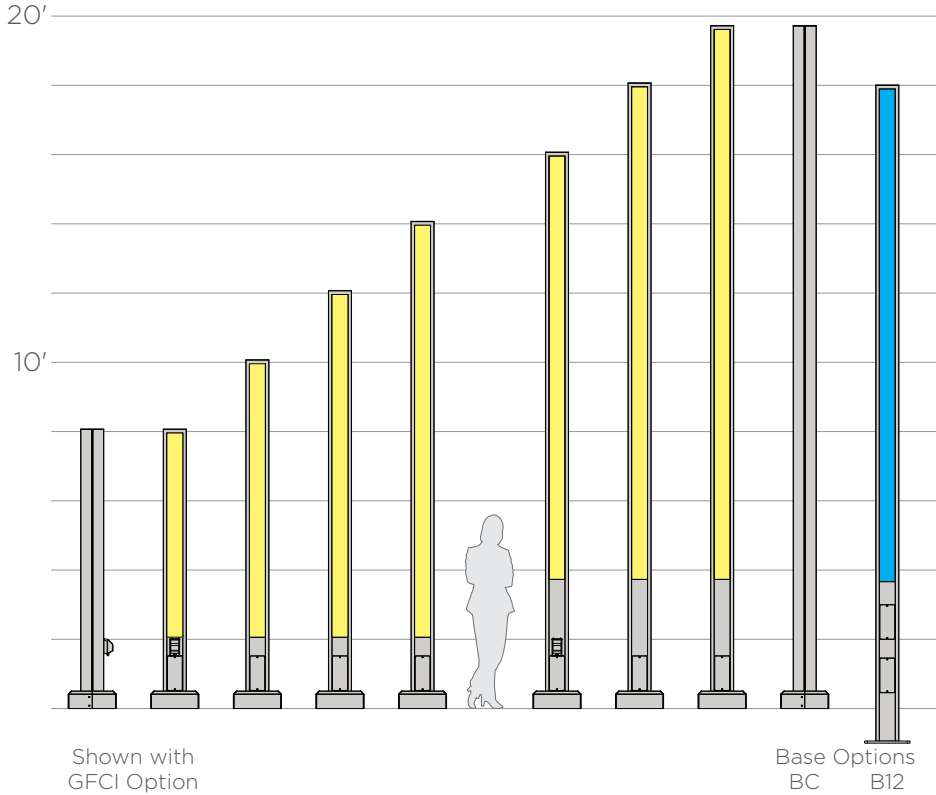
OPTICAL SYSTEM: LED available in 2700K, 3000K, 3500K, 4000K, or RGBW color changing behind diffused Satinice acrylic panel. Calculated L70 = 54,000 hours.

FINISHES AND MATERIALS: All exterior aluminum parts are polyester powder coat painted to AAMA-2604 standards. [Care and Maintenance](#)

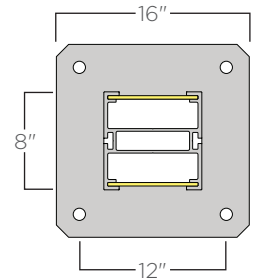
HARDWARE: All hardware is stainless steel. Anchor bolt kit is hot dipped galvanized.



Shown with perforated panel option PP/1.



| Height | Standard Output ⁽¹⁾ | |
|--------|--------------------------------|-------|
| | Lumens | Watts |
| 8' | 3106 | 121 |
| 10' | 4142 | 161 |
| 12' | 5177 | 201 |
| 14' | 6212 | 241 |
| 16' | 6212 | 241 |
| 18' | 7248 | 282 |
| 20' | 8283 | 322 |



ORDERING GUIDE: EXAMPLE: ELM-14-RGBW/30-C5-UNV-BC-BNR-STD

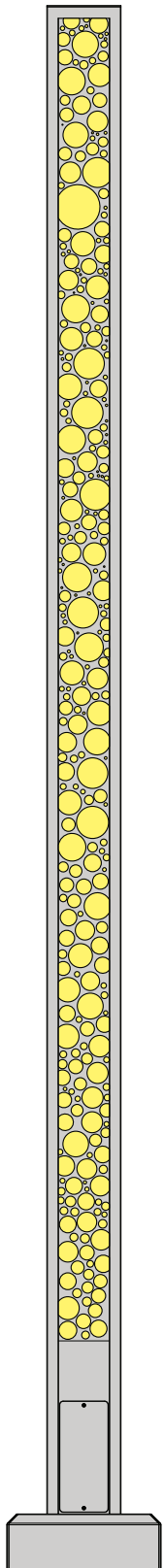


| | | | | | |
|----------|---------------|----------|---|-----------|---------------------------------|
| 1 | Series | 4 | Light Color | 7 | Voltage |
| ELM | Elm | L27 | 2700K | UNV | 120-277V |
| 2 | Type | L30 | 3000K | 8 | Base Options |
| LC | Light Column | L35 | 3500K | BC | Base Cover |
| 3 | Height | L40 | 4000K | B12 | 12" Burial ⁽³⁾ |
| 8 | 8' | RGBW/27 | RGBW with 2700K | 9 | Options |
| 10 | 10' | RGBW/30 | RGBW with 3000K | BNR | Banner Arm |
| 12 | 12' | RGBW/35 | RGBW with 3500K | FIX | Fixture Mounting |
| 14 | 14' | RGBW/40 | RGBW with 4000K | GFCI | GFCI Box ⁽⁴⁾ |
| 16 | 16' | | | PP/* | Perforated Panel ⁽⁵⁾ |
| 18 | 18' | 5 | Light Source⁽²⁾ | 10 | Special |
| 20 | 20' | SO | Standard Output | STD | Standard |
| | | 6 | Metal Finish | | |
| | | C* | See color options on finishes technical sheet | | |
| | | CSM | Custom Color | | |

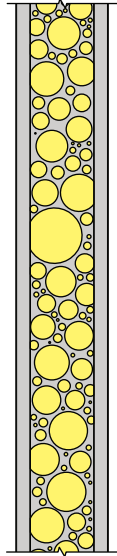
1. Output shown as combined output from front and back illumination based upon 3000K color temperature.
 2. Leave output section blank for color changing option.
 3. Buried base option not available with 20' height option.
 4. GFCI box comes with in-use or wet location cover. Outlet supplied by others.
 5. Perforated panel option on page 96.

FIXTURE TYPE: _____

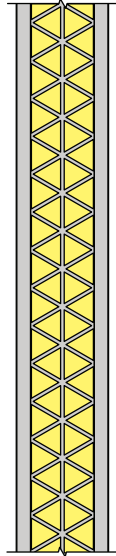
PROJECT NAME: _____



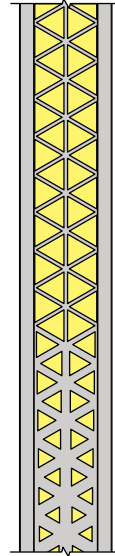
Standard Patterns



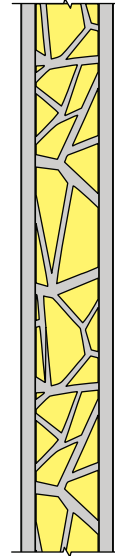
PP/1 - Circles



PP/2 - Triangles

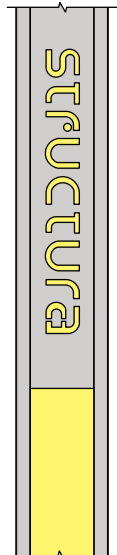


PP/3 - Faded

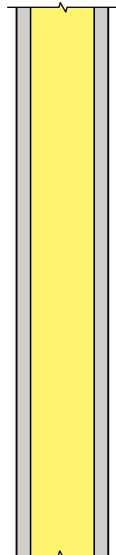


PP/4 - Stone

Custom Pattern



PP/CSM - Custom Example



5 1/2"

| Height | Illuminated Area | |
|--------|------------------|--------|
| | Width | Height |
| 8' | 5 1/2" | 70" |
| 10' | 5 1/2" | 94" |
| 12' | 5 1/2" | 118" |
| 14' | 5 1/2" | 142" |
| 16' | 5 1/2" | 146" |
| 18' | 5 1/2" | 170" |
| 20' | 5 1/2" | 191" |

Contact Structura for custom perforated panel designs for patterns, logos, addresses, etc. A DWG file of the custom pattern is preferred.